

Specifications

Huddle

466420

maharam

Application

Seating

Note: This textile is intended for residential use. This textile is available as a made-to-order pillow.

Characteristics

Content: 41% Wool, 31% Rayon, 27% Cotton, 1% Nylon

Finish: None

Additional Finishes Available: Alta, Alta Food & Beverage, Nanotex, Nanotex with Impermeable Barrier, Stain Repellent Finish

Backing: None

Width: 51" (130cm)

Bolt Size: 28 yards (26 m)

Weight: 31.2 oz/ly (1000 gr/lm)

Country of Origin: Belgium

Price

\$202.00 / C\$292.25 (FOB destination) / C\$288.75 (FOB origin)

Maintenance

S-Clean with mild, water-free dry cleaning solvent.

☒ ☒ ☒ ☒ ☐

Testing

Abrasion: ASTM D4966, 15,000 cycles Martindale

Flammability: CAL 117-2013



Specifications

Huddle

466420

maharam

Environmental

Greenguard Gold Certified

Greenguard Certified

Healthier Hospitals Compliant

LBC Red List Free

REACH Compliant

Contains Bio-Based Content

FR Free

Free of Intentionally Added PFAS

Warranty

None.

© 2018 Maharam

Complete product information at maharam.com

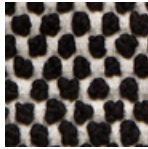
800.645.3943



001 Custard



002 Pottery



003 Tuxedo