

# Specifications

## Massive Paisley

### 465915

**maharam**

#### Application

Seating

#### Characteristics

Content: 76% Polyester, 24% Cotton

Finish: None

Additional Finishes Available: Alta, Alta Food & Beverage, Antimicrobial Stain Resistant Finish with Impermeable Backing, Nanotex, Nanotex with Impermeable Barrier, Stain Repellent Finish

Backing: None

Width: 57" (145cm)

Repeat: 48" V, 28" H

(122cm V, 71cm H)

Bolt Size: 38 yards (35 m)

Weight: 23.8 oz/ly (700 gr/lm)

Country of Origin: Germany

#### Price

\$258.00 / C\$372.25 (FOB destination) / C\$368.75 (FOB origin)

#### Maintenance

S-Clean with mild, water-free dry cleaning solvent.

☒ ☒ ☒ ☒ Ⓟ

#### Testing

Abrasion: ASTM D4157, 50,000 double rubs Wyzenbeek

Note: Abrasion test results exceeding ACT Performance Guidelines are not an indicator of product lifespan.

Multiple factors affect fabric durability and appearance retention.

Flammability: AS/NZS 3837 Unadhered

CAL 117-2013

NFPA 260

Lightfastness: AATCC 16.3, 40+ hours

☐ ☀ 🔥 💧 ☆

Specifications  
Massive Paisley  
465915

**maharam**

**Environmental**

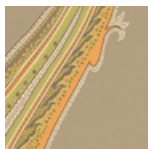
Greenguard Gold Certified  
Oeko-Tex Certified  
Healthier Hospitals Compliant  
LBC Red List Free  
REACH Compliant  
Contains Bio-Based Content  
FR Free  
Free of Intentionally Added PFAS

**Warranty**

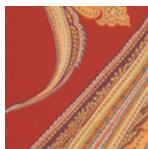
3 years.

© 2008 Maharam

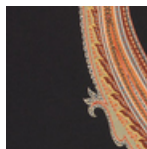
Complete product information at [maharam.com](http://maharam.com)  
800.645.3943



001 Ash



003 Cardinal



006 Night